



LUGLI AMEDEO MECCANICA

PASSION AND PRECISION. SINCE 1979.



**HIGH PRECISION MECHANICAL COMPONENTS PRODUCTION
FOR MANUFACTURING AND AERONAUTICAL INDUSTRY**



A successful story beginning in 1979

Lam srl is today a leader in **milling, turning, grinding assisted by a metrology room for quality control**. In continuous evolution and growth, our company began to expand and from the beginnings until now it has integrated fifty collaborators and can rely on a complete and high-tech machinery park. Especially today the market pushes us to grow further.



Our working processings

Collaboration, harmony and professional capacity, these are the values thanks to which our team turns all customers' requests in a search for excellence.



MILLING



TURNING



GRINDING



3D QUALITY CONTROL



COMPLEMENTARY PROCESSINGS

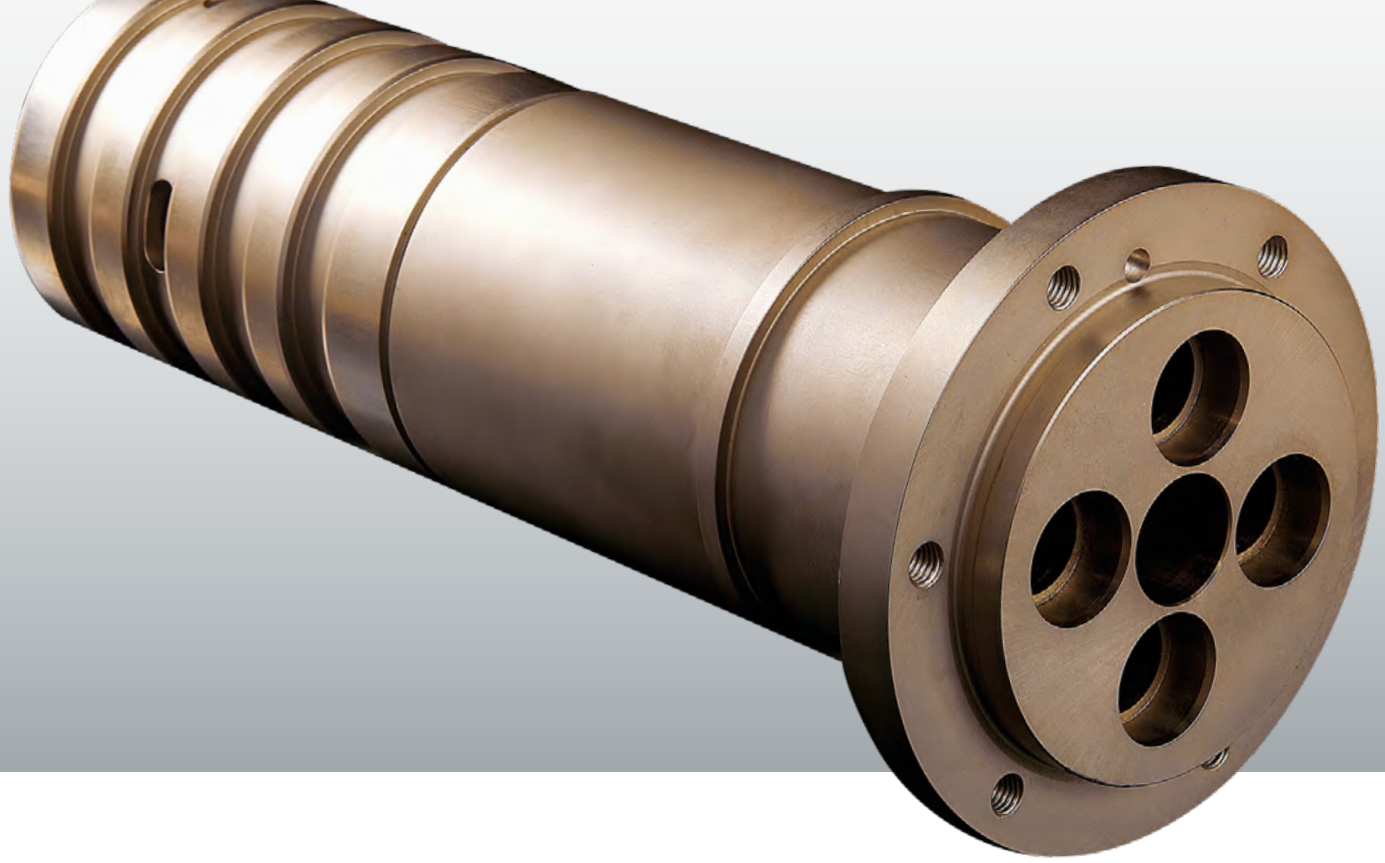
Technology, training and quality at the service of industry

LAM is a **UNI EN ISO 9001:2015** (quality management system) and **EN 9100:2018** (for aeronautic sector) certified company, thus meeting particular organizational and process requirements.

A **state-of-the-art machinery**, **precision** and **continuous training** have always been the pillars of our vision and our approach. To these we add very important aspects, equally crucial in achieving and maintaining a leadership position in the production of integrated components for the most complex industrial productions: passion, reliability and all the experience accumulated in over forty years of work.



LAM's growth has always been based on **innovation** and **flexibility**. This is how we have always evolved our model and our offer to be ready to respond to market development.



Enforcements

LAM operates in various sectors thanks to its flexibility and ability in adapting to different types of working processings. We guarantee solidity and future through technical preparation and training.



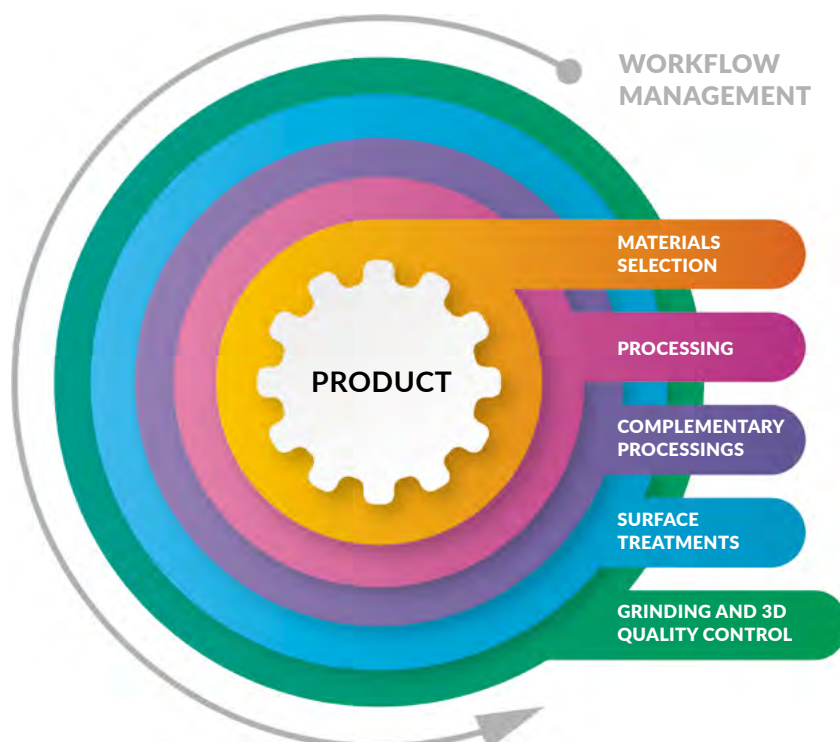
Together with customers, towards a result of excellence

Passion is an element always present in our working processings and during our customers' relations we guarantee maximum professionalism. We work alongside customer with our skills and technical knowledges and we become to all effects his partner and trusted collaborator. **Customer care** is a fundamental point of our company's mission, a value that we have always put at the first place.

"All customers problems are ours".

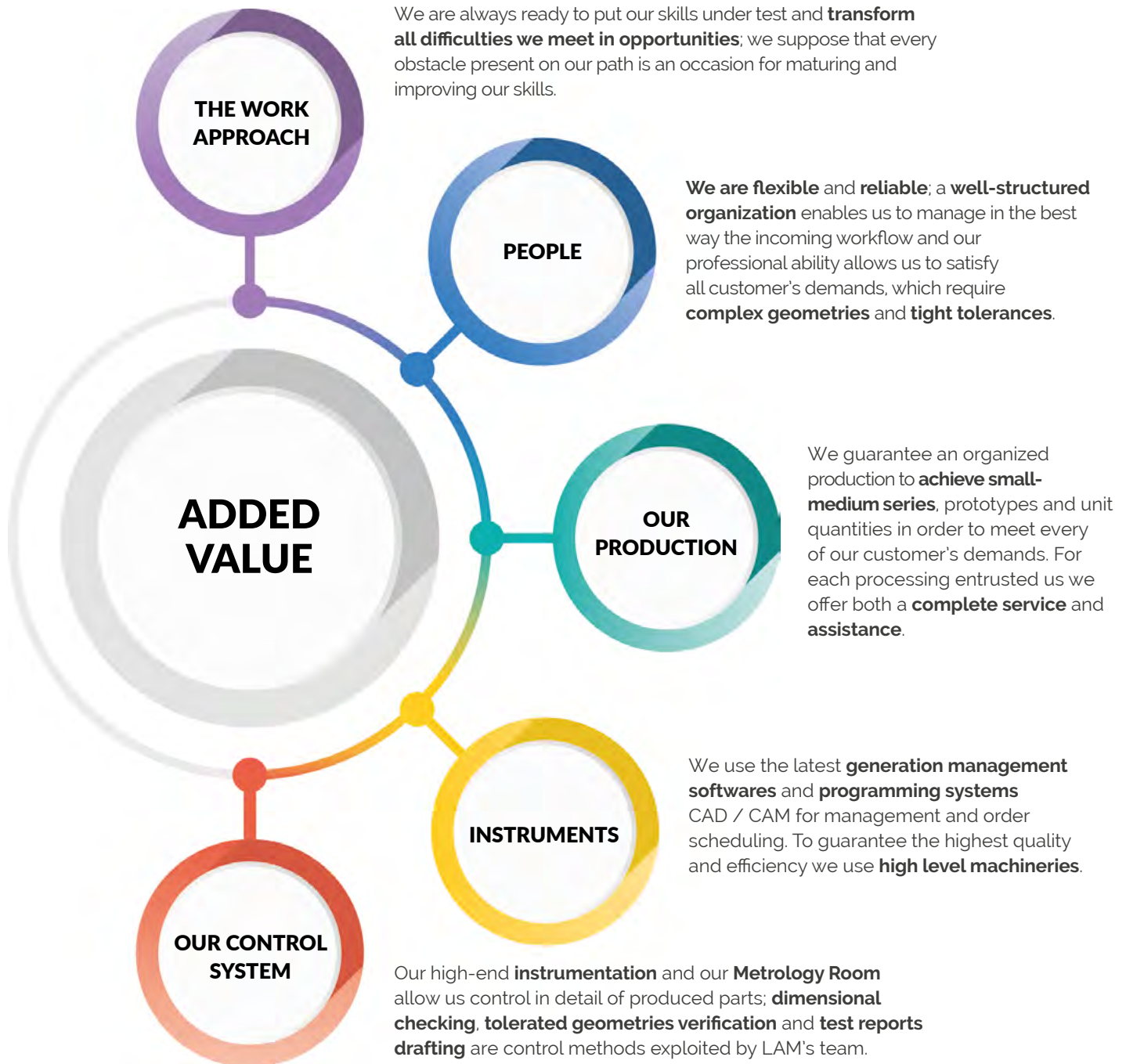
Our professionalism, your satisfaction

Our team's careful **planning session**, precedes the beginning of every single processing; nothing is left to chance.



Precision is our password, the common denominator for every job entrusted to us; **structured, defined and monitored processes**, combined with avant-garde **technological instruments**, leaded with professionalism and responsibility for sure by trained and specialized people, these are the elements that form an accurate processing and of great value.

All factors creating our added value





LUGLI AMEDEO MECCANICA







Tenacity, to believe in what you do and to believe that sooner or later you will make it.

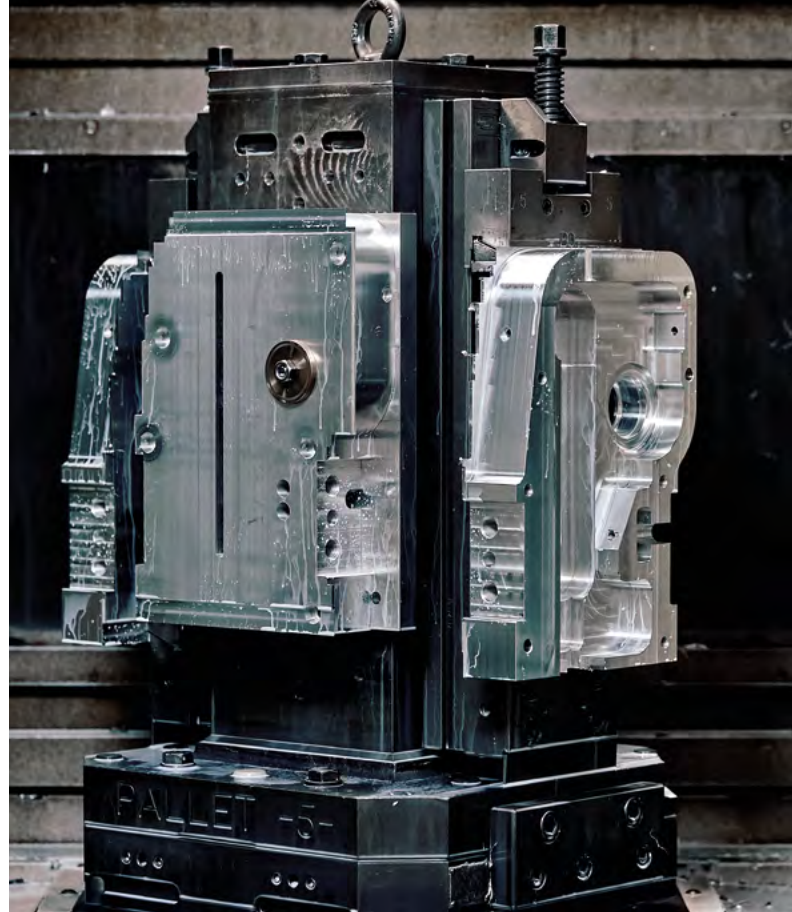
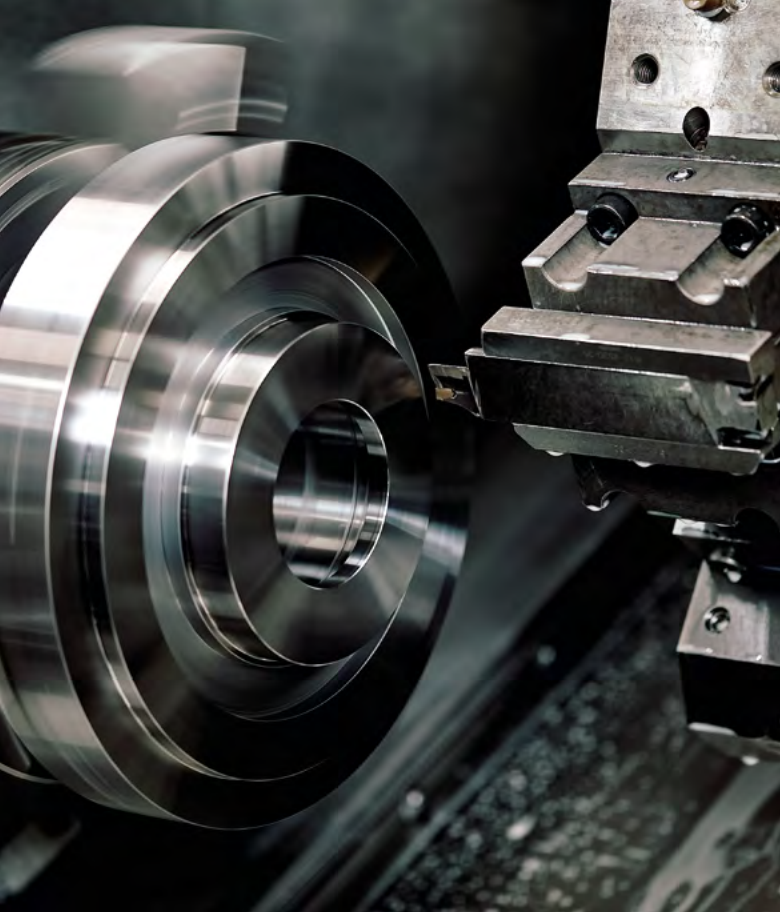
This is the success.

I always involved my whole family in all difficulties I met. Besides my wife Maura, also my brother.

Today a generational turnover is already happening. *With the input of my two sons Simone and Davide, together with experienced people, technical people, operating support in the office plus the new generations, we foresee an **excellent future.***



AMEDEO LUGLI



Our Machinery

TURNING CNC MACHINES

In relation to the characteristics of the part maximum turning diameter: 350 mm; maximum length 1000 mm.

CNC Turning and Milling for Integrated Machining

- 1 Mazak INTEGREX i-250H Smooth 5 axis equipped with tailstock with passage bar 65 mm
- 1 MAZAK INTEGREX 200 III 5 axis equipped with tailstock with passage bar 52 mm
- 1 MAZAK INTEGREX 200 IV 5 axis equipped with tailstock with passage bar 65 mm

CNC Turning Machines

- 1 TAKISAWA TCN-2100 L6 with passage bar diameter 52 mm
- 1 TAKISAWA TT-2100G 2 axis with automatic loader and double spindle
- 1 TAKISAWA LA-200 L6 with passage bar diameter 52 mm
- 1 TAKISAWA LA-250 L12 with passage bar diameter 75 mm
- 1 TAKISAWA NEX-110 H7 with passage bar diameter 75 mm
- 1 MORI SEIKI CL150 with automatic loader LNS diameter 32 mm, with passage bar 32 mm
- 1 MORI SEIKI CL200 with automatic portal loader max diameter 52 mm
- 1 MORI SEIKI NLX2500 with passage bar 80 mm
- 1 TORNOS type GT26/6 II, 6 axis, capacity 25,4 mm

TECHNICAL OFFICE

- 1 Openmind software

MILLING CNC MACHINES

Horizontal machining centers equipped with 2 pallets

3 MAKINO A51NX with continuous positioning platen 400x400

1 OKK HMC with continuous positioning platen 400x400

3 MORI SEIKI SH 403 with continuous positioning platen 400x400

1 MORI SEIKI NHX 4000 with continuous positioning platen 400x400

1 AKIRA SEIKI H3-XP with continuous positioning platen 320x320

Vertical machining centers

1 MORI SEIKI NV5000 travels 1020x510x510 mm equipped with Nikken divider

TECHNICAL OFFICE

1 Vero Solutions software

GRINDING MACHINES

1 ELEKTRA model 1518 CNC

1 VOUMARD model 5 ALP1000 for internal diameters

1 TACHELLA 1018 UA for external diameters

METROLOGY AND QUALITY CONTROL ROOM

1 measuring machine **ZEISS Duramax** 500x500x500

3 **3D Dea Image** CNC measuring machine

1 **"VM500 Zoom** Video Microscope

Digital Altimeters **MAHR** and **TESA**

1 profilometer **SM "PGS 100"**

Measuring instruments **MAHR** and **TESA**

Hardness tester

Roughness tester

Our Operators are AUKOM certified.

COMPLEMENTARY PROCESSING

Bandsawing machines – sandblasting machines – Tumbling machines

1 CNC AUTOMATIC BANDSAWING MACHINE FORTE diameter 360 mm

1 AUTOMATIC BANDSAWING MACHINE diameter 360 mm

1 AUTOMATIC BANDSAWING MACHINE diameter 200 mm

1 Sandblaster FN31

2 Tumbling RC105

We also rely on certified and consolidated external partners to carry out surface and thermal treatments, electroerosion, broaching and grinding to deliver the finished product.



LUGLI AMEDEO MECCANICA



LAM SRL

Via delle Fabbriche Nuove 21/23
13856 Vigliano Biellese (BI)

T: +39 015.8129960
www.lam.srl

commerciale@meccanicalugli.com
commerciale2@meccanicalugli.com